

# FS500 BBQ Trailer

## Specification

<b>Model:</b>	FR250WH
<b>Dimensions:</b>	500*200*230cm
<b>Window:</b>	2m Flip-out windows, with gas struts
<b>Color:</b>	RAL3017
<b>Electrical:</b>	220V/50Hz
<b>Weight:</b>	1,200kg
<b>Material:</b>	Exterior wall: XPS Border: Diamond plate Insulation: 40mm Black cotton Interior wall: ACM & stainless steel Workbench: 201 stainless steel Floor: Non-slip aluminium checkered floor
<b>Trailer Accessory:</b>	88cm safety chain Trailer hitch ball Trailer coupler Trailer stabilizers Heavy-duty trailer jack with wheel Flip down stainless steel serving shelf Door stop 7 pin trailer connector Air conditioner Brake system Gas piping Stainless steel generator cage 7.2KW gasoline generator Stainless steel propane tank holder
<b>Electrical System:</b>	Electrical panel board Circuit breaker 8* 10A power sockets 32A generator receptacle with cover
<b>Lighting:</b>	Interior LED light bars Side lights ARD-certified trailer tail lights & red reflectors License lights

<b>Water Sink Kits:</b>	2 compartment water sink with side splash Water faucets Floor drain Soap dispenser Paper box
<b>Water Supply System:</b>	24V water pumps 120L plastic wastewater tank= 120L plastic clean tank 10L water heater
<b>Kitchen Equipment:</b>	Stainless steel workbench with cabinets 250L under-counter fridge 300L under-counter freezer 280L vertical drink cooler Deep fryer with 2 tanks (each tank: 14 liters) Gas grills 1KW food warmer 2.5m stainless steel exhaust hood 0.25HP Rooftop exhaust fan Cash drawer 2m stainless steel wall cabinets
<b>Warranty:</b>	1 year warranty for free

## Details



- Side -



- Front -



- Side -



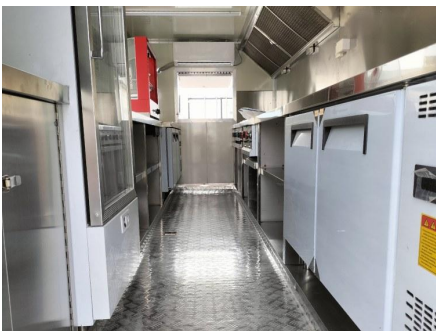
- Side -



- Side -



- Side -



- Inside -



- Electrical System -



- Exhaust Hood -



- Fryers -



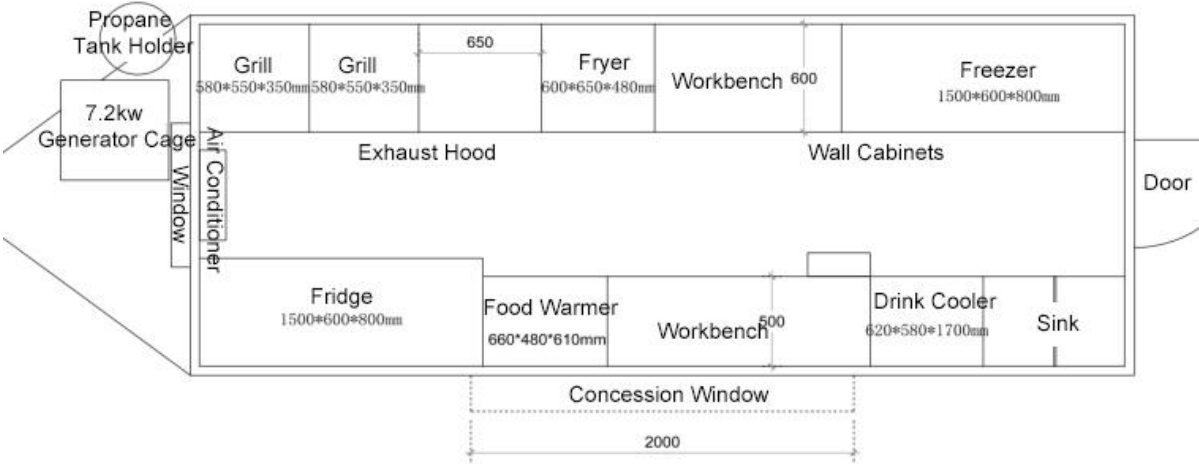
- Sinks -



- Grills -

# Floor Plan

Model: FD500, Dimension: 500\*200\*200cm, Color: RAL3017



# Design

